

**Thursday,  
May 10, 2012  
at  
7 pm**

**Southlake  
Town Hall  
third floor  
meeting room**

**1400 Main St.  
Southlake, TX  
76092**

## **Pictures from the past**



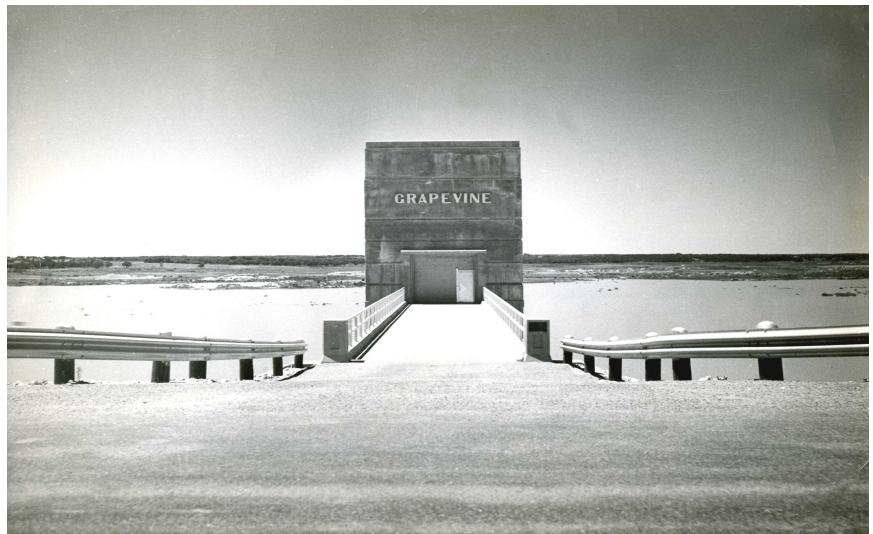
"Looking SE from a point 25 ft.  
downstream of Sta. 64 showing  
downstream slope sodding,  
mulching and fertilizing."

April 10, 1952

(Photo courtesy USACE)

# **Lake Grapevine: It Helped Put Southlake on the Map**

The Southlake Historical Society  
presents  
the story of Lake Grapevine



Don't miss "**Lake Grapevine: It Helped Put Southlake on the Map**" on Thursday, **May 10, 2012 at 7pm.**

Program speaker, **Dale King**, began as a Lake Grapevine Park Ranger in 1975 and serves as the area's **Natural Resource Manager.**

Mr. King will discuss the prehistoric importance of the area, known as the Denton Creek bottomlands before the lake was completed in 1952 by the Army Corps of Engineers (ACE) as a reservoir to supply water for the Park Cities in Dallas.

**History-lovers, dinosaur-diggers, environmental-enthusiasts, and students of all ages will enjoy the program.**

Open to the public. Donations at the door are greatly appreciated by the Southlake Historical Society, a 501 (c)(3) organization. For more information visit [www.southlakehistory.org](http://www.southlakehistory.org) or call 817-223-9606.